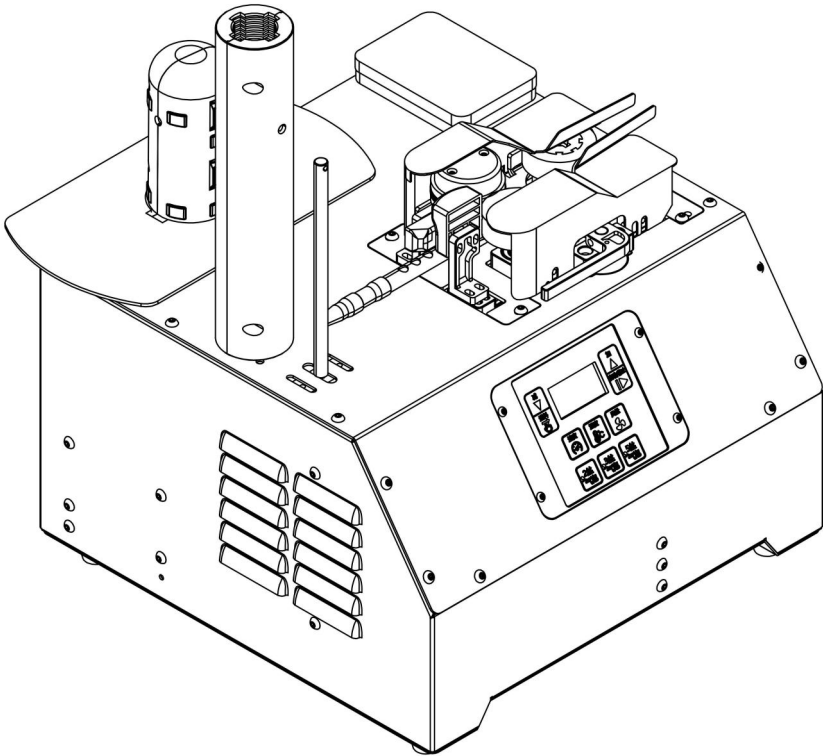


# H08 Inflator Operation Manual



**Before installing and using the product, please read the user manual carefully and keep it properly for future use.**

# 1.0 About this operation manual

The purpose of compiling this manual is to guide operators in understanding the positions of each component of the air filling machine, and to learn system operation and the troubleshooting of basic faults.

The contents of this manual are applicable to the H08 inflator.


## 2.0 Safety instructions


1. Read and fully understand all the contents of this manual.

2. Before you begin the formal installation of the operating system, make sure that the following is true:

- The authorized distributor or technical personnel has systematically trained the operators.
- The operator has read and understood all safety signs posted on the equipment.
- Confirm that the power supply for the inflator meets the requirements of the machine and has a reliable grounding device.


 Warning: Improper grounding may cause electric shock.


 Warning: Do not open the machine case. Only authorized technicians or trained full-time maintenance personnel can open the machine case.

 Warning: Be careful not to be caught by the machine. When the machine pulls the air column roll and inflates the air column roll, do not put your fingers, hair, jewelry, clothes and other things close to the traction wheel on the machine.

3. The airbag can only be used as packaging.


4. Before maintaining and repairing the equipment, please make sure that the power switch of the machine has been turned off and the power plug is removed.

 Warning: Except for the "Maintenance and Repair" operations specified in this manual, do not attempt to repair or modify the H08 air pump yourself. All maintenance work must be performed by our authorized representatives, authorized dealers, or certified professional technicians. We shall not be liable for any equipment damage caused by improper maintenance.

 Warning: Do not open the safety case of the machine except for the operation of replacing blades and traction wheels as specified in this manual.

5. Check equipment regularly to ensure that:

- The power cable is not damaged and the copper core is not exposed:
- No membrane residue on the traction wheel:
- All control and display components can operate normally.

 Warning: During use, if you find any abnormal phenomenon that is inconsistent with the description in this operation manual, please immediately turn off the power switch, unplug the power plug, and contact our technical service representative.

6. Ambient condition

Storage temperature: Machine 0-43°C; Air column roll: 0-43°C . Operating temperature: Machine 16-43°C; Air column roll: 16-43°C.

7. Potential risks

Most of the components of the H08 inflator are protected by protective enclosures, but a small number of components are exposed, so care is still needed when operating.

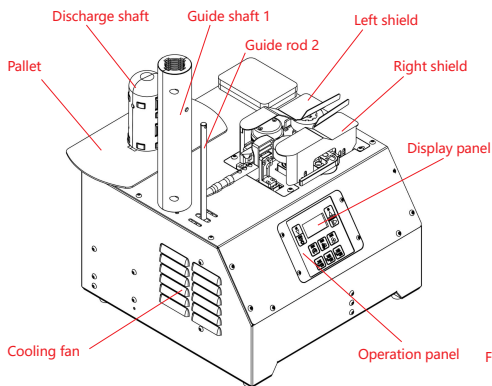


Figure 1 (Full Machine Diagram)

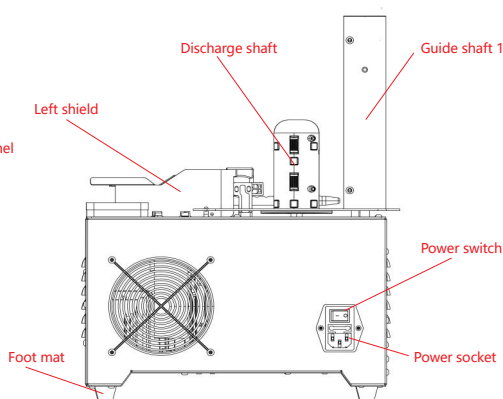


Figure 2 (machine Rear View)

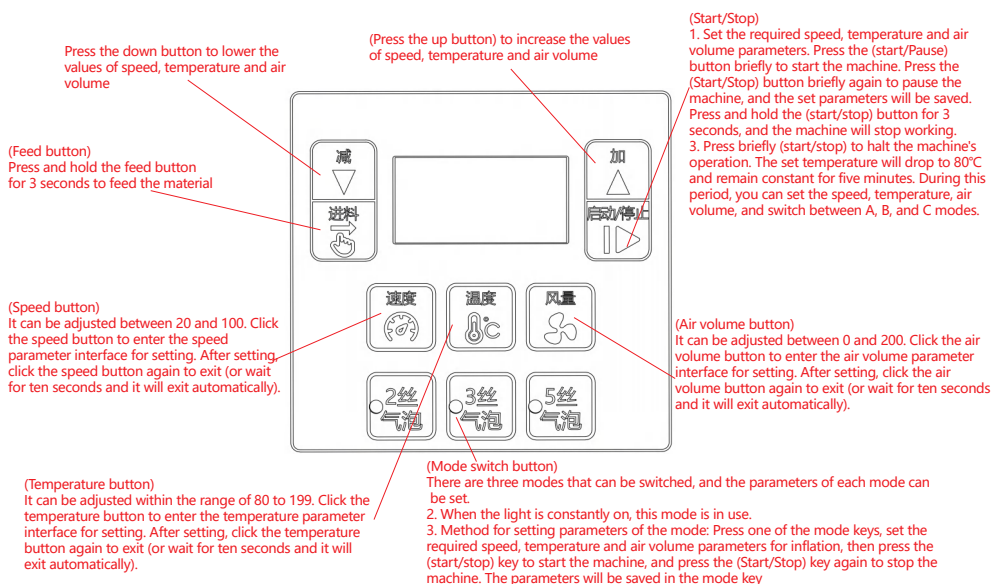


Figure 3 (Machine Operation Panel)

## 3.0 Product Introduction

### 3.1 System Introduction

The H08 Filling Machine is a user-friendly device featuring an intuitive interface and simple operation. Its robust metal casing ensures durability while maintaining compact dimensions weighing under 9kg. With versatile adaptability, it allows users to adjust temperature, airflow, and speed according to bag characteristics, achieving maximum speeds of 16 meters per minute. This cost-effective solution makes it an ideal choice for small factories, warehouses, and retail stores.

### 1. Basic parameters

Inflator dimensions: 320MM\*320MM\*437MM(length \* width \* height)

The packaging size of the inflator is 375MM\*375MM\*340MM (length \* width \* height)

Net weight: 8.6KG

### 2. Technical parameters

Product Model: H08

Power connection method :Y

Speed :16 meters per minute MAX

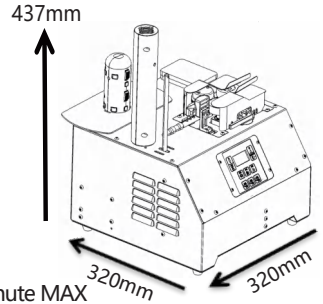
Input voltage: Factory default AC 110V/220V

Rated power :500W

Gas volume :860L/ minute MAX

Rated frequency: 50HZ/60HZ

Electric shock protection category: Class I



## 3.2 Operating Method

After connecting the power socket to the power cord, turn on the power switch, then install the film into the feeding shaft. Pass the film around the middle of the guiding rod 1 and the guiding rod 2, directly pass it through the air pipe head and pull it close to the roller. Press and hold the feeding button for a long time. When the film is pulled outside the inflator, press the start button to start inflating (refer to Figure 4 (machine film winding diagram)).

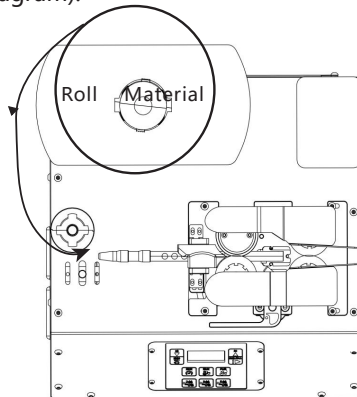


Figure 4 (machine film winding diagram)

## 3.3 Fault Code Diagnosis and Handling

**E00:** Abnormal communication. This alarm indicates that the communication between the line control boards is disconnected. Check if the ribbon cable has fallen off and if the terminals of the control board are loose. If none of the above conditions exist, the control board needs to be replaced.

**E01:** The temperature sensor is abnormal. There is a probability of false alarm during cold start in low-temperature conditions. Press the pause button to exit and then restart.If this alarm occurs frequently during operation or when the ambient temperature is relatively high, it indicates that the temperature sensor has failed.

E02: Overcurrent of the heating plate. If this alarm occurs, first check whether the heating wheel is damaged and whether the heating plates built in front of and behind the heating wheel are damaged. If they are damaged, please replace them.

E03: The heating circuit is open. When this alarm occurs, first check whether the leads of the built-in heating plates before and after the heating wheel are broken. If the leads are not broken, then check whether the power supply line connecting the heating plate leads is broken. If all the above are normal, the control board needs to be replaced.

E04: Motor overcurrent. The appearance of this code indicates that the motor has been overloaded or the driving part is stuck. If all the above are normal, the motor needs to be replaced.

## 3.4 Precautions

1. Do not use in a damp environment.

2. Before operation, please note the following matters:

-If the ground wire is not properly grounded, it may cause electric shock.

-Do not open the protective or maintenance cover. Only authorized manufacturer or authorized dealer maintenance personnel can open it.

-Avoid contact of fingers, hair, clothing and jewelry with the rollers during operation or loading of materials to prevent entanglement.

3. Inflatable bags are only used as packaging materials. Do not use as a floating device, pillow, children's toy, etc.

4. This inflator should not be loaded with more than 7KG of materials, and the diameter of the membrane material should not exceed 22CM. When loading materials, heavy pressure and leaning on them are strictly prohibited.

5. When materials are driven by machines, static electricity is generated. Materials themselves also have static electricity. Operators must not wear slippers or bare feet; otherwise, the human body will become a conductor for the discharge of static electricity, thereby causing the discomfort of being electrocuted.

6. If the film cannot run smoothly or gets stuck after using the machine for a long time, please replace the blade in time.

7. During long-term use of the machine, if problems such as loose edge sealing or damaged sealing occur, please check whether the temperature is correct and whether the rollers are damaged. If any damage is found, please replace them in time.

8. The speed and air volume of the inflator need to be adjusted in coordination. The parameter values of different types of membranes are not the same and there are no fixed standard values. You need to adjust and record them by yourself.

**Prohibited: The equipment must not be operated without materials!!**

## 3.5 Power Requirements



Warning: Improper grounding may cause electric shock.



Warning: Using a power strip will increase static electricity. Static discharge can cause operational problems and make the operator feel uncomfortable.

The H08 inflator requires a power supply voltage of 110V/220V with frequencies of 50Hz/60Hz, featuring rated power of 500W and rated current of 2.2A. As the machine is internally grounded, it must use single-phase three-wire power cables. The user's electrical grid must have a reliable grounding system. Without this, static electricity cannot be properly discharged, potentially causing electrocution risks as the human body becomes a conductive path for static discharge.

### 3.6 Precautions

Warning: Using films not provided by our company may cause poor bag-making problems, potentially damage the machine, and also affect the protective effect of the air-filled bags.

The storage temperature range for the film is 0-43°C. The film should be stored within this temperature range. Storing the film outside this temperature range may cause it to be scrapped.

The operating temperature range of the film is 16-43°C. The film should be used with in this temperature range to achieve the most ideal sealing effect.

### 3.7 System Composition

1. Main power switch: This switch is located at the back of the machine and is used to turn ON and OFF the system.
2. Main power cord: Plug the power cord into the corresponding power socket.
3. Operation Section: Operation panel: Used for operating and setting relevant values of the machine. Display panel: Visual operation, allowing you to know all the parameters of the machine.
4. Machine bottom cover: Inside this machine bottom cover are the electrical and mechanical components of the machine.

**⚠ Warning: Do not open the bottom cover of the machine. Only the technicians and authorized maintenance personnel of our company can open it.**

5. Discharge shaft

It is used to install the film roll, enabling the film roll to achieve fixed support, allowing the film roll to rotate and be fed into the machine for inflation and sealing operations.

6. Left and right guards

It is used for placing devices such as air tubes, blades and heating modules.

**⚠ Warning: The heating module is at a high temperature. Be careful of burns.**

**⚠ Warning: Beware of being caught in the machine.**

## 4.0 Maintenance and Repair

### 4.1 Preventive Maintenance

**⚠ Warning: When maintaining or repairing the H08 inflator, be sure to turn it off first and unplug the main power cord from the socket.**

Warranty period	Content	Description
weekly	Check for cleanliness	1. Open the left and right protective covers of the machine and blow out the dust and debris inside. Wipe and clean the surface of the ironing wheel with a cotton cloth dipped in alcohol. 2. Check if there is any wear on the machine parts. If so, replace the parts in time.
monthly	contact	1. Arrange an on-site inspection; 2. Contact the authorized dealer or the technical service representative of our company to inspect the equipment.

## 4.2 Replace the Blade

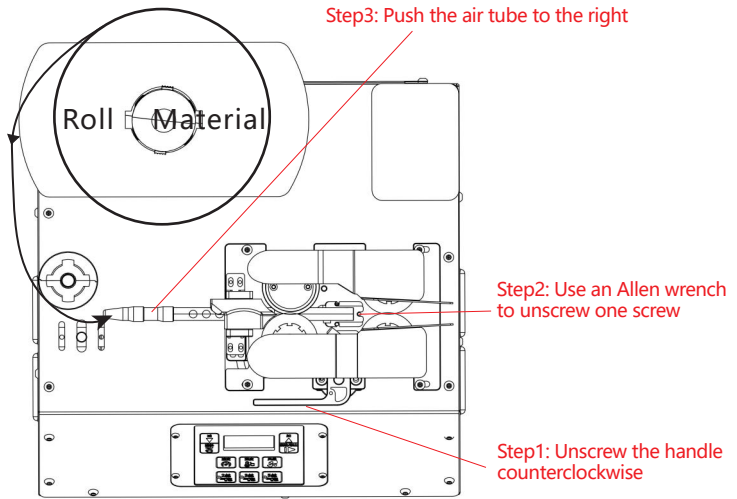


Figure 5 (Schematic Diagram of disassembly and installation of air pipe and blade)

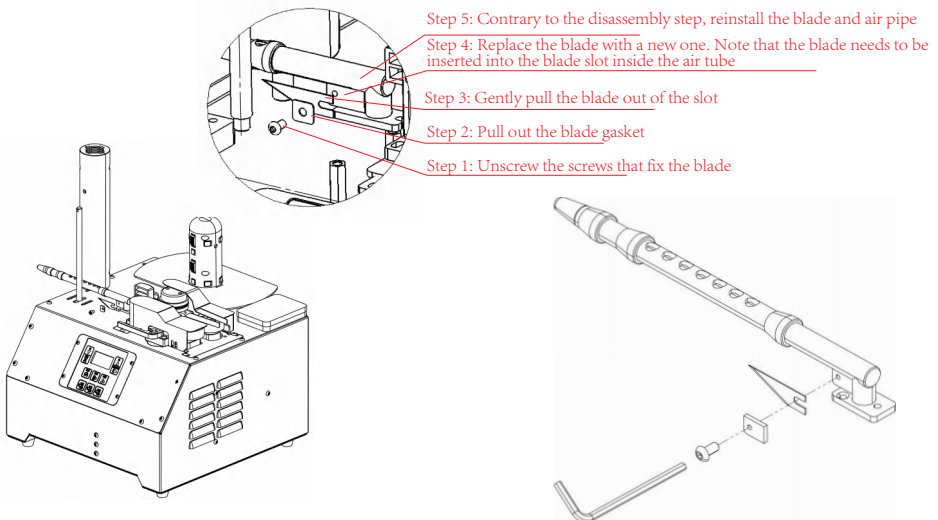


Figure 6 (Schematic Diagram of disassembly and installation of air pipe and blade)

Note: The blade must be correctly placed in the blade slot. The position of the blade and the gasket cannot be interchanged

Note: The traction wheel and the blade are vulnerable parts. Please replace them in time. For purchase, please contact an authorized dealer

